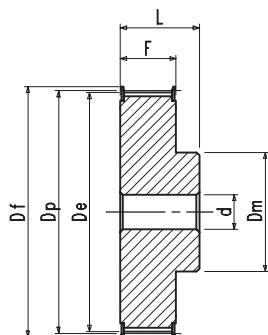
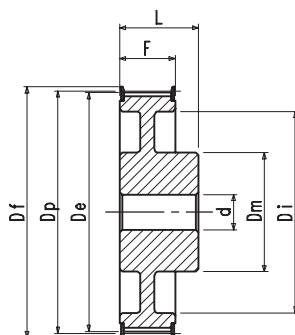


## POLIAS 14M HTD 40

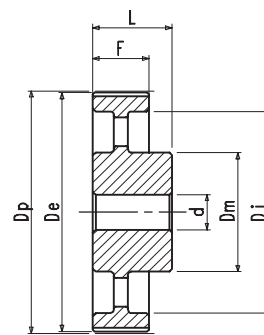
Faça download de nossos desenhos padrões.



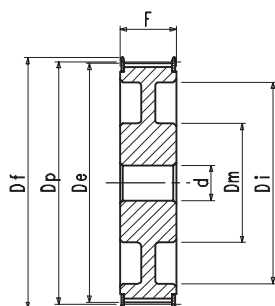
6F



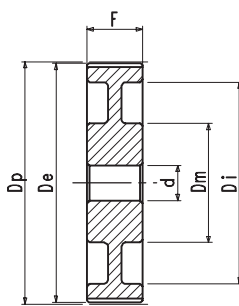
6WF



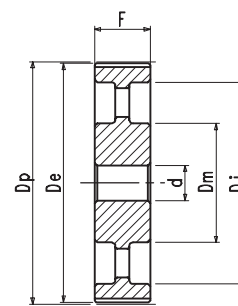
6A



10WF



10W

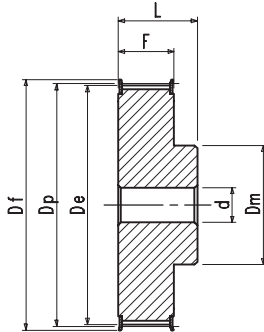


10A

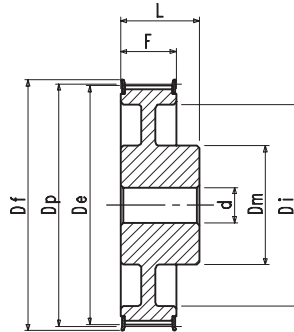
14M HTD 40		Dp	De	Df	Dm	Di	F	L	d	Peso
Referência	Número de Dentes	mm	mm	mm	mm	mm	mm	mm	mm	kg
28 14M 40 - 6F	28	124,78	122,12	127,0	100,0	-	54,0	69,0	24,0	4,73
29 14M 40 - 6F	29	129,23	126,57	138,0	100,0	-	54,0	69,0	24,0	5,15
30 14M 40 - 6F	30	133,69	130,99	138,0	100,0	-	54,0	69,0	24,0	5,40
32 14M 40 - 6F	32	142,60	139,88	154,0	100,0	-	54,0	69,0	24,0	6,50
34 14M 40 - 6F	34	151,52	148,79	160,0	100,0	-	54,0	69,0	24,0	6,60
36 14M 40 - 6F	36	160,43	157,68	168,0	100,0	-	54,0	69,0	24,0	7,70
38 14M 40 - 6F	38	169,34	166,60	183,0	120,0	-	54,0	69,0	24,0	9,00
40 14M 40 - 6F	40	178,25	175,49	188,0	120,0	-	54,0	69,0	24,0	9,60
44 14M 40 - 6F	44	196,08	193,28	211,0	120,0	-	54,0	69,0	24,0	11,80
48 14M 40 - 6WF	48	213,90	211,11	226,0	135,0	172,0	54,0	69,0	24,0	12,00
56 14M 40 - 6WF	56	249,55	246,76	256,0	135,0	207,0	54,0	69,0	28,0	14,00
64 14M 40 - 6WF	64	285,21	282,41	296,0	135,0	242,0	54,0	69,0	28,0	16,50
72 14M 40 - 6A	72	320,86	318,06	-	135,0	278,0	54,0	69,0	28,0	16,50
80 14M 40 - 6A	80	356,51	353,71	-	135,0	314,0	54,0	69,0	28,0	18,50
90 14M 40 - 6A	90	401,07	398,28	-	135,0	358,0	54,0	69,0	28,0	20,00
112 14M 40 - 6A	112	499,11	496,32	-	135,0	456,0	54,0	69,0	28,0	26,70
144 14M 40 - 6A	144	641,71	638,92	-	135,0	600,0	54,0	69,0	28,0	35,00
168 14M 40 - 6A	168	748,66	745,87	-	135,0	706,0	54,0	69,0	28,0	44,20
192 14M 40 - 6A	192	855,62	852,82	-	135,0	813,0	54,0	69,0	28,0	52,20
* 216 14M 40 - 6A	216	962,57	959,76	-	150,0	920,0	54,0	69,0	28,0	54,00

## POLIAS 14M HTD 55

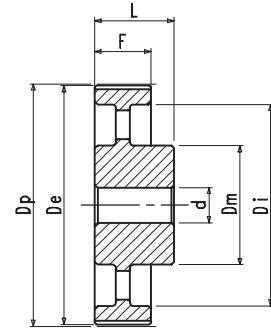
Faça download de nossos desenhos padrões.



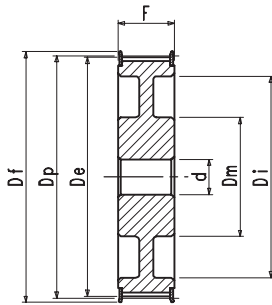
6F



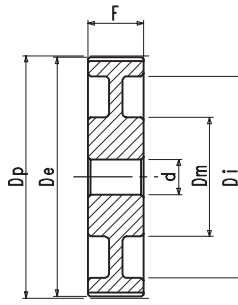
6WF



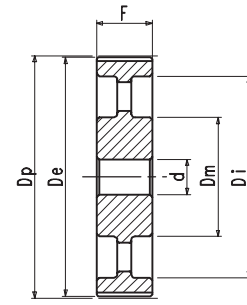
6A



10WF



10W

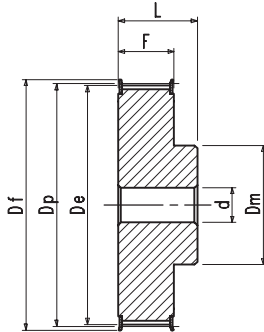


10A

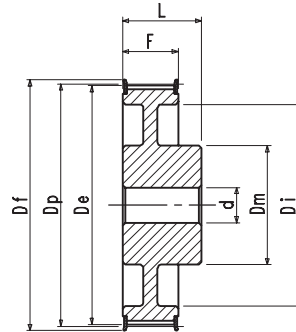
14M HTD 55		Dp	De	Df	Dm	Di	F	L	d	Peso
Referência	Número de Dentes	mm	mm	mm	mm	mm	mm	mm	mm	kg
28 14M 55 - 6F	28	124,78	122,12	127,0	100,0	-	70,0	85,0	24,0	5,60
29 14M 55 - 6F	29	129,23	126,57	138,0	100,0	-	70,0	85,0	24,0	6,20
30 14M 55 - 6F	30	133,69	130,99	138,0	100,0	-	70,0	85,0	24,0	7,00
32 14M 55 - 6F	32	142,60	139,88	154,0	100,0	-	70,0	85,0	24,0	7,80
34 14M 55 - 6F	34	151,52	148,79	160,0	100,0	-	70,0	85,0	24,0	8,30
36 14M 55 - 6F	36	160,43	157,68	168,0	100,0	-	70,0	85,0	24,0	9,60
38 14M 55 - 6F	38	169,34	166,60	183,0	120,0	-	70,0	85,0	24,0	11,20
40 14M 55 - 6F	40	178,25	175,49	188,0	120,0	-	70,0	85,0	24,0	12,50
44 14M 55 - 6F	44	196,08	193,28	211,0	120,0	-	70,0	85,0	24,0	15,00
48 14M 55 - 10WF	48	213,90	211,11	226,0	135,0	172,0	70,0	70,0	24,0	13,70
56 14M 55 - 10WF	56	249,55	246,76	256,0	135,0	207,0	70,0	70,0	28,0	15,20
64 14M 55 - 10WF	64	285,21	282,41	296,0	135,0	242,0	70,0	70,0	28,0	18,70
72 14M 55 - 10A	72	320,86	318,06	-	135,0	278,0	70,0	70,0	28,0	19,20
80 14M 55 - 10A	80	356,51	353,71	-	135,0	314,0	70,0	70,0	28,0	20,00
90 14M 55 - 10A	90	401,07	398,28	-	135,0	358,0	70,0	70,0	28,0	22,60
112 14M 55 - 10A	112	499,11	496,32	-	135,0	456,0	70,0	70,0	28,0	29,50
144 14M 55 - 10A	144	641,71	638,92	-	135,0	600,0	70,0	70,0	28,0	39,00
168 14M 55 - 10A	168	748,66	745,87	-	135,0	706,0	70,0	70,0	28,0	51,00
192 14M 55 - 10A	192	855,62	852,82	-	135,0	813,0	70,0	70,0	28,0	58,50
* 216 14M 55 - 10A	216	962,57	959,76	-	150,0	920,0	70,0	70,0	28,0	63,00

## POLIAS 14M HTD 85

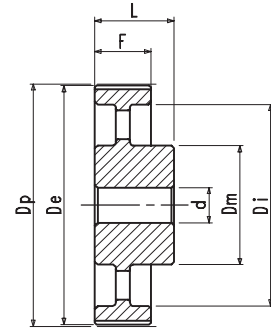
Faça download de nossos desenhos padrões.



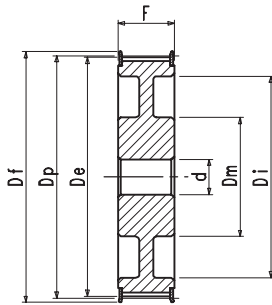
6F



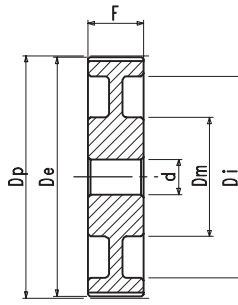
6WF



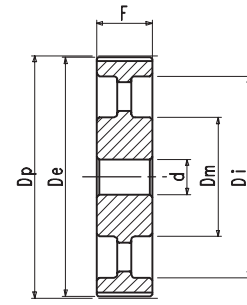
6A



10WF



10W

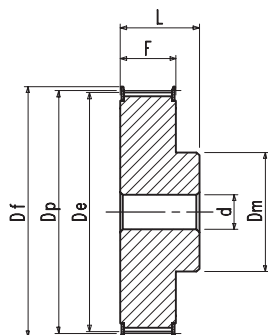


10A

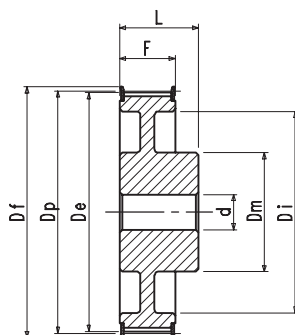
14M HTD 85		Dp	De	Df	Dm	Di	F	L	d	Peso
Referência	Número de Dentes	mm	mm	mm	mm	mm	mm	mm	mm	kg
28 14M 85 - 6F	28	124,78	122,12	127,0	100,0	-	102,0	117,0	24,0	8,30
29 14M 85 - 6F	29	129,23	126,57	138,0	100,0	-	102,0	117,0	24,0	8,80
30 14M 85 - 6F	30	133,69	130,99	138,0	100,0	-	102,0	117,0	24,0	9,20
32 14M 85 - 6F	32	142,60	139,88	154,0	100,0	-	102,0	117,0	24,0	11,00
34 14M 85 - 6F	34	151,52	148,79	160,0	100,0	-	102,0	117,0	24,0	12,00
36 14M 85 - 6F	36	160,43	157,68	168,0	100,0	-	102,0	117,0	32,0	13,20
38 14M 85 - 6F	38	169,34	166,60	183,0	120,0	-	102,0	117,0	32,0	15,20
40 14M 85 - 6F	40	178,25	175,49	188,0	135,0	-	102,0	117,0	32,0	17,10
44 14M 85 - 6F	44	196,08	193,28	211,0	135,0	-	102,0	117,0	32,0	21,20
48 14M 85 - 6F	48	213,90	211,11	226,0	150,0	-	102,0	117,0	32,0	25,30
56 14M 85 - 10WF	56	249,55	246,76	256,0	150,0	207,0	102,0	102,0	32,0	23,40
64 14M 85 - 10WF	64	285,21	282,41	296,0	150,0	242,0	102,0	102,0	32,0	27,20
72 14M 85 - 10A	72	320,86	318,06	-	150,0	278,0	102,0	102,0	32,0	28,80
80 14M 85 - 10A	80	356,51	353,71	-	150,0	314,0	102,0	102,0	32,0	30,10
90 14M 85 - 10A	90	401,07	398,28	-	150,0	358,0	102,0	102,0	32,0	33,00
112 14M 85 - 10A	112	499,11	496,32	-	150,0	456,0	102,0	102,0	32,0	41,80
144 14M 85 - 10A	144	641,71	638,92	-	150,0	600,0	102,0	102,0	32,0	52,30
168 14M 85 - 10A	168	748,66	745,87	-	150,0	706,0	102,0	102,0	32,0	60,30
192 14M 85 - 10A	192	855,62	852,82	-	165,0	813,0	102,0	102,0	32,0	86,00
* 216 14M 85 - 10A	216	962,57	959,76	-	165,0	920,0	102,0	102,0	32,0	88,00

## POLIAS 14M HTD 115

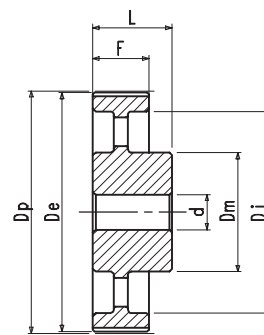
Faça download de nossos desenhos padrões.



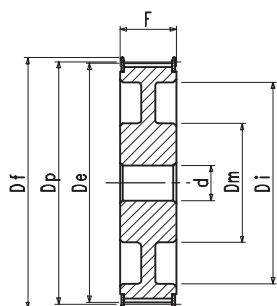
6F



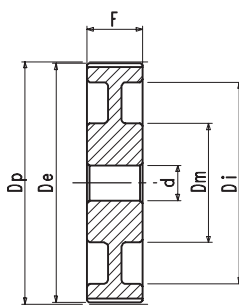
6WF



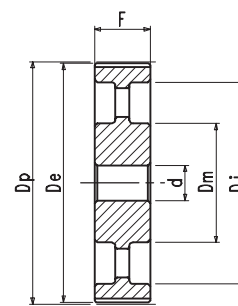
6A



10WF



10W



10A

14M HTD 115		Dp	De	Df	Dm	Di	F	L	d	Peso
Referência	Número de Dentes	mm	mm	mm	mm	mm	mm	mm	mm	kg
28 14M 115 - 6F	28	124,78	122,12	127,0	100,0	-	133,0	148,0	32,0	10,00
29 14M 115 - 6F	29	129,23	126,57	138,0	100,0	-	133,0	148,0	32,0	11,00
30 14M 115 - 6F	30	133,69	130,99	138,0	100,0	-	133,0	148,0	32,0	11,50
32 14M 115 - 6F	32	142,60	139,88	154,0	100,0	-	133,0	148,0	32,0	13,20
34 14M 115 - 6F	34	151,52	148,79	160,0	100,0	-	133,0	148,0	32,0	14,80
36 14M 115 - 6F	36	160,43	157,68	168,0	120,0	-	133,0	148,0	32,0	16,60
38 14M 115 - 6F	38	169,34	166,60	183,0	120,0	-	133,0	148,0	32,0	19,50
40 14M 115 - 6F	40	178,25	175,49	188,0	135,0	-	133,0	148,0	32,0	22,10
44 14M 115 - 6F	44	196,08	193,28	211,0	140,0	-	133,0	148,0	32,0	27,00
48 14M 115 - 6F	48	213,90	211,11	226,0	150,0	-	133,0	148,0	32,0	32,00
56 14M 115 - 6F	56	249,55	246,76	256,0	150,0	-	133,0	148,0	32,0	44,20
64 14M 115 - 10WF	64	285,21	282,41	296,0	150,0	242,0	133,0	133,0	32,0	35,00
72 14M 115 - 10A	72	320,86	318,06	-	150,0	278,0	133,0	133,0	32,0	36,10
80 14M 115 - 10A	80	356,51	353,71	-	150,0	314,0	133,0	133,0	32,0	38,60
90 14M 115 - 10A	90	401,07	398,28	-	150,0	358,0	133,0	133,0	32,0	41,00
112 14M 115 - 10A	112	499,11	496,32	-	150,0	456,0	133,0	133,0	32,0	52,00
144 14M 115 - 10A	144	641,71	638,92	-	165,0	600,0	133,0	133,0	32,0	67,80
168 14M 115 - 10A	168	748,66	745,87	-	165,0	706,0	133,0	133,0	32,0	84,00
192 14M 115 - 10A	192	855,62	852,82	-	165,0	813,0	133,0	133,0	32,0	101,00
* 216 14M 115 - 10A	216	962,57	959,76	-	165,0	920,0	133,0	133,0	32,0	112,00